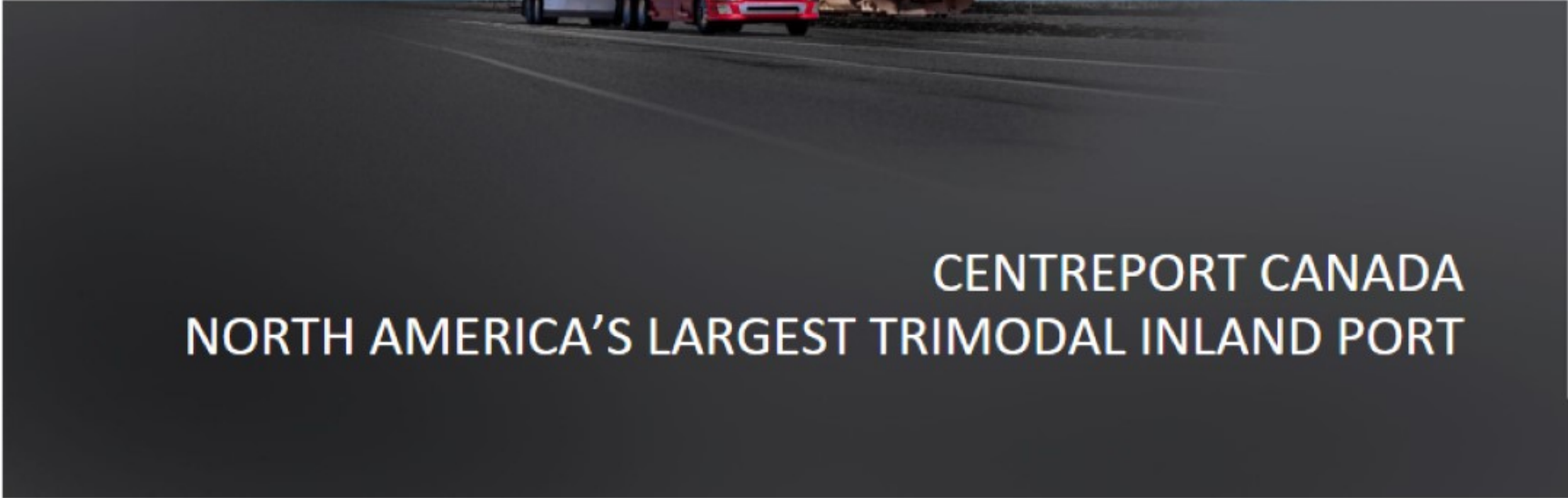


TDS, WTC, EDW AND CENTREPORT PRESENT

# Manitoba, Canada – Gateway to Business in North America

Discover the value of doing business in Manitoba, learn the unique advantages of relocating or expanding here and utilize resources & supports available to newcomers and business owners.






CENTREPORT CANADA  
NORTH AMERICA'S LARGEST TRIMODAL INLAND PORT

## DIANE GRAY | PRESIDENT & CEO

---

Diane Gray is the founding President and CEO of CentrePort Canada Inc. CentrePort is a 20,000 acre trimodal inland port and Foreign Trade Zone in Winnipeg's capital region.



 (204) 784.1300

 [dgray@centreport.ca](mailto:dgray@centreport.ca)

## ACCESS TO MARKETS

### Mid Continent Corridor Gateway

- Eastern USA
- Southern USA
- Mexico

### Asia Pacific Gateway

- Ports of Vancouver, Delta & Prince Rupert

### Atlantic Gateway

- Halifax & Montreal Ports

### Arctic Gateway

- Air Polar Routes
- Marine Polar Routes



## WHAT IS AN INLAND PORT?

---

Inland ports provide quality industrial land connected to multi-modal transportation and an ease of doing business to help companies efficiently manage their supply chains and connect them to markets around the world.



## OVERVIEW

---

- 20,000 acres
- **Trimodal** transportation access
- **Integrated logistics and infrastructure platform** to support trade-oriented investment
- **Prime industrial land** available
- Sustainable and **complete community** development approach
- Single-window access to Canada's **FTZ programs**



## TRIMODAL LOGISTICS

---



3 CLASS 1 RAIL CARRIERS  
(CP, CN & BNSF)

### 3 Class 1 Rail Carriers

Only city on the Canadian prairies served by 3 continental Class I railways: CN, CP & BNSF.



INTERNATIONAL  
TRUCKING HUB

### International Trucking Hub

Major trucking centre with some of Canada's largest carriers located on site.



24/7 WORLDWIDE  
CARGO OPERATIONS

### 24/7 Worldwide Cargo Operations

International airport ranked #1 in Canada for dedicated freighter aircraft movements. Carriers on site include FedEx, Purolator, UPS, Canada Post, Air Canada Cargo and Cargojet.

## FAST TRACKED LAND DEVELOPMENT

---

- CentrePort North is a **Special Planning Area**
- Cost and planning **certainty**
- **Concurrent** subdivision and rezoning applications
- **Quick** turnaround times – 2 weeks for building permits and 3 months for full subdivision and rezoning





## DEVELOPMENT AT CENTREPORT

### Planned as a complete community

- New residential community
- Protected green space
- Post secondary partnerships on-site
- 100+ new companies in various stages of development

### Focus on sustainable development

- All new projects must implement sustainable development measures

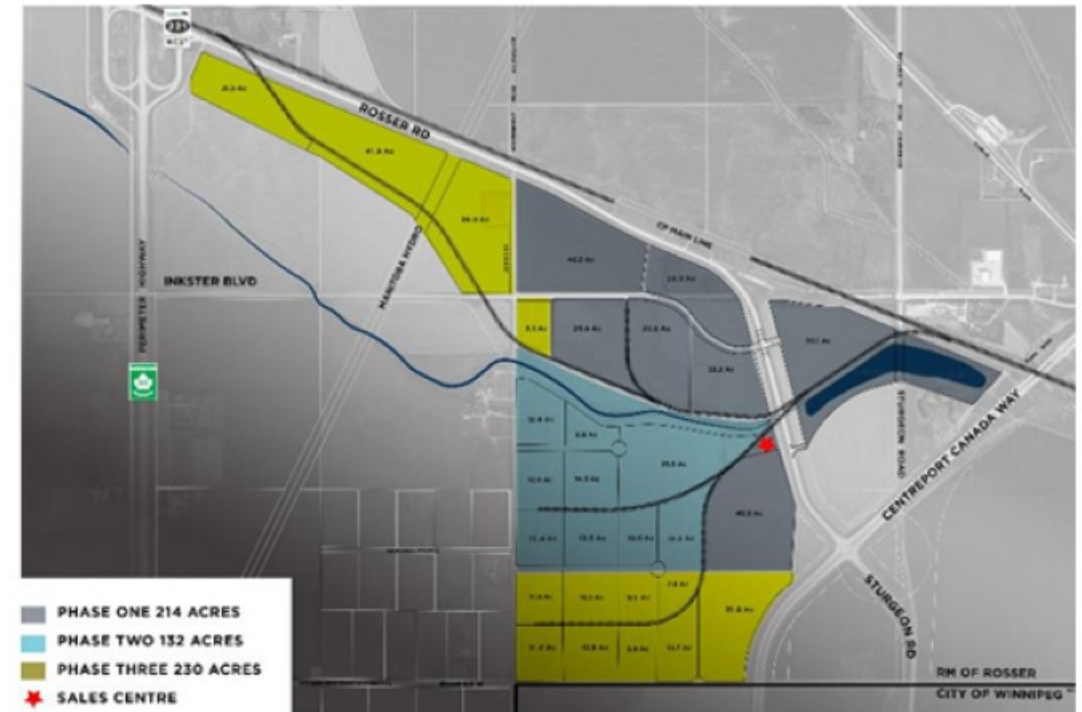
### Infrastructure investment

- Expressway allows for 5 minutes to 90km/h
- New water treatment facility
- Site has service capacity for high voltage customers



## CENTREPORT CANADA RAIL PARK

- 665 acres, zoned I3 - **Heavy Industrial**
- Combines industrial space with **logistics infrastructure**
- Access to **3 Class 1 railways** from a single location
- Located **south of CP's main east-west line** across Canada
- Access to **interstate-quality highways** allowing for 5 mins to 90 km/55 mph



## KEY SECTORS

- Advanced Manufacturing
- Agribusiness & Food Processing
- Biomedical & Life Sciences
- E-commerce, Transportation & Logistics
- Energy & the Environment

## INDUSTRY LEADERS AT CENTREPORT



“The amount of investment and development happening at CentrePort right now is something we haven’t seen in a long time - maybe ever. This is the strongest industrial market Winnipeg has seen in 50 years.”

*Martin McGarry*

*CEO, Cushman & Wakefield | Stevenson*

*President & CEO, MMI Asset Management*



## THANK YOU

Stay up to date - follow us!

Twitter: [@CentrePortCAN](#)

Instagram: [@centreportcan](#)